

AhnLab

V3 Net for Windows Server 9.0

Trusted Security for Stable Server Operation

Powerful malware prevention and proactive defense based on Multi-dimensional Analysis Platform

Why We Need to Protect Servers

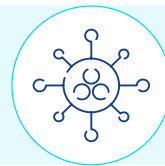
More malware targeting servers are distributed nowadays since corporations keep their business data in servers. A server is positioned where corporate data is gathered and managed, and is directly related to productivity.

When a corporate server is infected, it may cause company-wide infections and business risks.



Server-targeted malware

- Disruption of business operations



Increase of advanced attacks

- Stealthy/hidden malware
- Zero-day attacks



Lack of management & response

- Insufficient management system and security expertise

Powerful and Effective Server Protection

Based on its exclusive Multi-dimensional Analysis Platform, AhnLab V3 Net for Windows Server 9.0 provides features to protect critical data and contribute to secured server operations.

Powerful server protection and malware prevention

- Detects and blocks malware through multi-dimensional analysis (behavioral/reputation-based detection, malicious URL/IP DB, cloud-feed through AhnLab Smart Defense)
- Obtains threat visibility through 'Active Defense' feature and thereby actively responds

Various features for optimized server operation

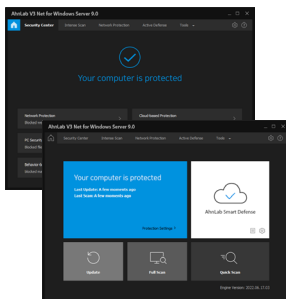
- Alerts to the administrator with notification mail when threats are detected
- Optimized for various corporate environments

Fast and accurate scan with SmartScan

- Up to 6 times faster scanning based on its exclusive SmartScan
- Minimizes resource usage of server

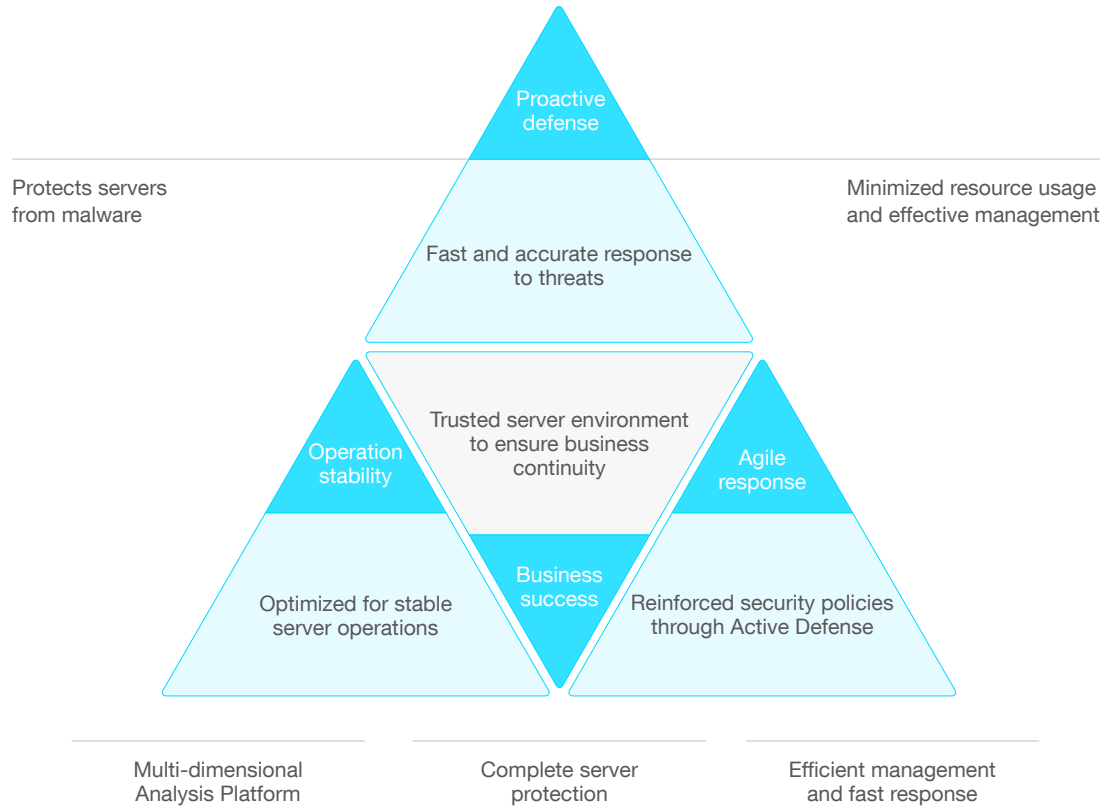
Simple but strong protection with efficient UX

- Easily check the security status through main screen
- Scans or executes System Optimization feature with just a single tap



Benefits

AhnLab V3 Net for Windows Server 9.0 protects critical servers that store important corporate data, and thereby contributes to business success.



System Requirements

Operating Systems	Free Space	Recommended
Windows Server 2008 SP2 (KB4493730, KB4474419)	CPU	800MHz or higher
	Memory	512MB
Windows Server 2008 R2 SP1 (KB4490628, KB4474419)	CPU	2GHz or higher
	Memory	1GB
Windows Server 2012 (2012/2012 R2/2016/ 2019/2022)	CPU	2GHz or higher
	Memory	4GB
Other	HDD	2GB or higher
	Languages	English, Chinese(Simplified), Korean

* Supports all 32bit and 64bit(x64) CPU of the OS above. (Except IA 64)